



FLEXCEL NX Wide 4260/3548 System

Versatile and smart

miraclon

The FLEXCEL NX System has a serious advantage. One that goes beyond the traditional capabilities of flexo. It's flexo without compromise. Ready to compete?

Efficient large-format plate layout and production is yours with the FLEXCEL NX Wide 4260/3548 System. With enhanced edge detection for easy media handling and a streamlined install, it's where versatile, high-quality imaging celebrates outstanding print efficiencies and exceptional print quality. The standard for high volume operations, its compact footprint defines doing more with less.

Unmatched technology.

You want unsurpassed quality output with zero impact on productivity. Unique FLEXCEL NX imaging technology gives you the powerful NX Advantage that sets you up for guaranteed success on press. And with KODAK SQUARESPOT Imaging Technology, impeccable process control is yours. Consistent, efficient, compelling. What quality gap?

Looking for the fastest imaging speed in the industry? FLEXCEL NX Imagers expose the FLEXCEL NX Thermal Imaging Layer at exceptional speed. Expect highly efficient and cost-effective plate making. On repeat.

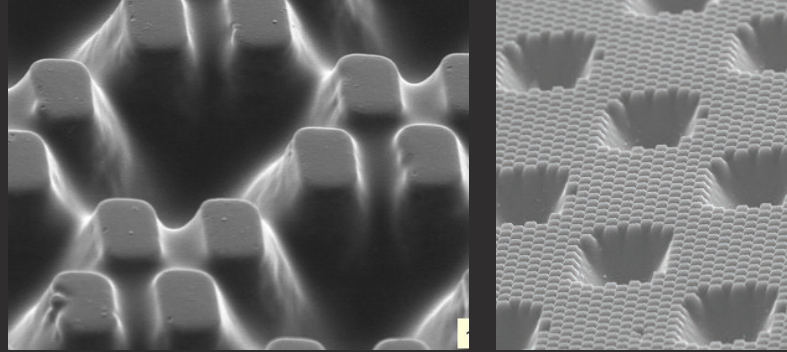
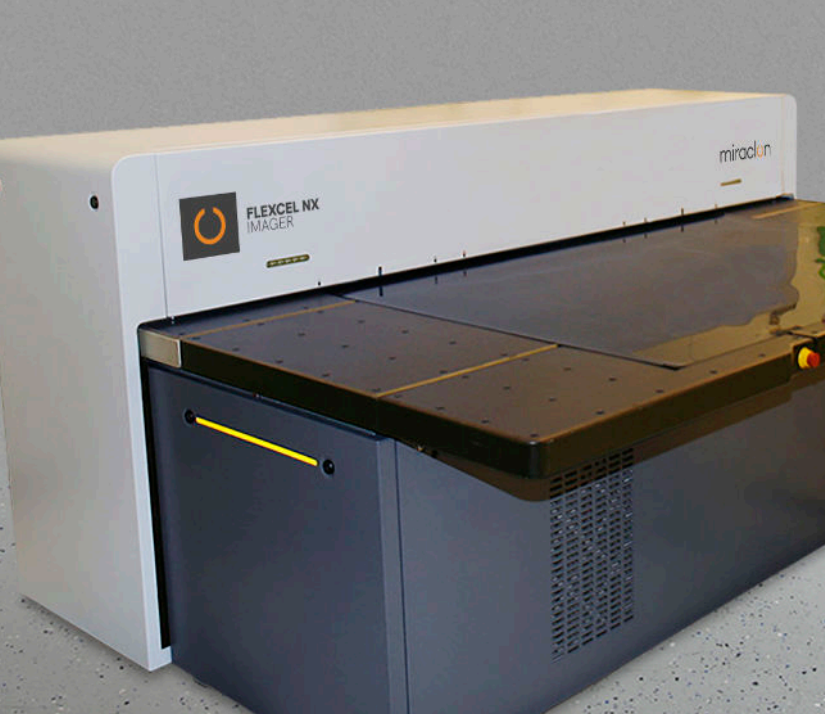
| It's flexo. Transformed.

Rich capabilities.

Versatile products and proven technologies that can adapt quickly to shifting markets are the rule. Already a robust platform, enhancements to the FLEXCEL NX System are backwards compatible. Outstanding imaging technology, impressive productivity and process stability along with easy maintenance — a solid ROI.

Complete solution.

With innovative hardware, software, and consumables designed to work seamlessly together, the FLEXCEL NX System delivers one powerful performance. Along with Miraclon's world-class service and support, you have a best-in-class solution for high-definition flexo printing that exceeds expectations. Even yours.



Complete integration

FLEXCEL NX Wide 4260/3548 Imager

Easy to use and semi-automatic with impressively fast imaging, it's designed to work exclusively with FLEXCEL NX Plate Kits. And for a process-free alternative to conventional silver halide film, it's fully compatible for DITR Film imaging.

FLEXCEL NX Wide Laminator

Quick and simple lamination of the FLEXCEL NX Thermal Imaging Layer to the FLEXCEL NX Plate prior to exposure and processing removes all oxygen between mask and plate for full-amplitude flat top dots. Crystal clear difference.

FLEXCEL NX Central Software

The FLEXCEL NX System includes FLEXCEL NX Central Software, an automated solution which optimizes the plate layout process and streamlines the delivery of Miracron's advanced plate surface patterning technology. The software maximizes production efficiency so that you can complete more jobs in less time, at a lower cost.

Powered by NX Advantage

NX Advantage technology, that includes patented Advanced Edge Definition, is unique to the FLEXCEL NX System and gives flexo printers an unprecedented level of control over ink transfer during the printing process, resulting in substantial print production efficiency and quality benefits with a simple plate portfolio.

SQUARESPOT Technology

SQUARESPOT Imaging Technology is Kodak's award-winning imaging technology. SQUARESPOT Technology allows printers to reach a higher level of stability, accuracy, and reliability in their printing operation.

FLEXCEL NX Wide 4260/3548 System

Technical Specifications

| Workflow specifications | | | | | |
|---|---|-----------------------------------|------|------|--|
| Workflow connectivity | FLEXCEL NX Central Software; accepts 1 bit TIFF and LEN files from all workflow systems | | | | |
| Specifications for imaging Flexcel NX Thermal Imaging Layer (TIL) | | | | | |
| Imaging speed | With DIGICAP NX Patterning applied: 12 m ² /hr Without DIGICAP NX Patterning applied: 10 m ² /hr | | | | |
| Media sizes and throughput * (includes loading and unloading) | TIL size | For plate size | 4260 | 3548 | Sheets imaged per hour@ 2400 dpi with DIGICAP NX |
| | 640 x 838 mm (25.2 x 33 in) | 610 x 762 mm (24 x 30 in) | • | • | 12 |
| | 838 x 1097 mm (33 x 43.2 in) | 800 x 1067 mm (31.5 x 42 in) | • | • | 10 |
| | 940 x 1230 mm (37 x 48 in) | 900 x 1200 mm (35.4 x 47.2 in) | • | • | 9 |
| | 1097 x 1554 mm (43.2 x 61.2 in) | 1067 x 1524 mm (42 x 60 in) | • | | 6 |
| Resolution | 2400 dpi | | | | |
| Repeatability | ± 8 microns between 2 consecutive exposures on the same TIL left on the drum | | | | |
| Finish Plate Capabilities | 300 lpi maximum linescreen (0.4% to 99.6%) | | | | |
| Physical characteristics for imager | | | | | |
| Dimensions (H x W x D) | 120 x 254 x 181 cm (47.2 x 100 x 71.3 in), Loading table height: 83 cm (33 in) | | | | |
| Debris removal cabinet (UDRC) | 88 x 63 x 54 cm (35 x 25 x 21 in) | | | | |
| Weight | Imager: 990 kg (2183 lb) UDRC: 68 kg (150 lb) | | | | |
| Physical characteristics for laminator | | | | | |
| Dimensions (H x W x D) | 87 x 273 x 133 cm (34 x 107 x 52 in), Table height: 81 cm (32 in) | | | | |
| Weight | 700 kg (1540 lb) | | | | |
| Operating conditions | | | | | |
| Temperature | 17° - 30°C (63° - 86°F) | | | | |
| Humidity | 40% - 60% relative humidity, non-condensing | | | | |
| Optional upgrades | | | | | |
| Hybrid Option | Enables the imaging of thermal offset plates | | | | |
| Format Upgrade | FLEXCEL NX Imager 3548 can be upgraded to a FLEXCEL NX Imager 4260 | | | | |
| Resolution Upgrade | High resolution imaging option 9600 X 4800 dpi | | | | |
| Accessories | Densitometer, moveable media rack and two rolling carts, FLEXCEL NX Workstation | | | | |

*FLEXCEL NX System is compatible with DITR Film.

A full portfolio

| | Plate sizes | | | | | |
|--------------------------------|------------------------------|---------------------------------|-----------------------------------|--------------------------------|--------------------------------|--------------------------------|
| System Type | 610 x 762 mm 24 x 30 inch | 800 x 1067 mm 31.5 x 42 inch | 900 x 1200 mm 35.4 x 47.2 inch | 1067 x 1524 mm 42 x 60 inch | 1270 x 1651 mm 50 x 65 inch | 1270 x 2032 mm 50 x 80 inch |
| FLEXCEL NX Wide 5080 System | • | • | • | • | • | • |
| FLEXCEL NX Wide 4260 System | • | • | • | • | | |
| FLEXCEL NX Wide 3548 System | • | • | • | | | |
| FLEXCEL NX Mid System | • | • | | | | |
| FLEXCEL NX Narrow System | • | | | | | |