



## FLEXCEL NX Wide 5080 System

### Maximize to Minimize

miraclo<sup>n</sup>

The FLEXCEL NX System has a serious advantage. One that goes beyond the traditional capabilities of flexo. It's flexo without compromise. Ready to compete?

Market-proven for combining high-volume with large-format applications, the FLEXCEL NX Wide 5080 System brings expansive benefits for maximum productivity with minimal waste. Your 5080 advantages: Large format production, efficient plate layouts, operator-friendly functionality, and serious imaging speed.

#### Unmatched technology.

You want unsurpassed quality output with zero impact on productivity. Our unique imaging technology gives you the powerful NX Advantage that sets you up for guaranteed success on press. And with KODAK SQUARESPOT Imaging Technology, impeccable process control is yours. Consistent, efficient, compelling. What quality gap?

Looking for the fastest imaging speed in the industry? FLEXCEL NX Imagers expose the FLEXCEL NX Thermal Imaging Layer at breathtaking speed. Expect highly efficient and cost-effective plate making. On repeat.

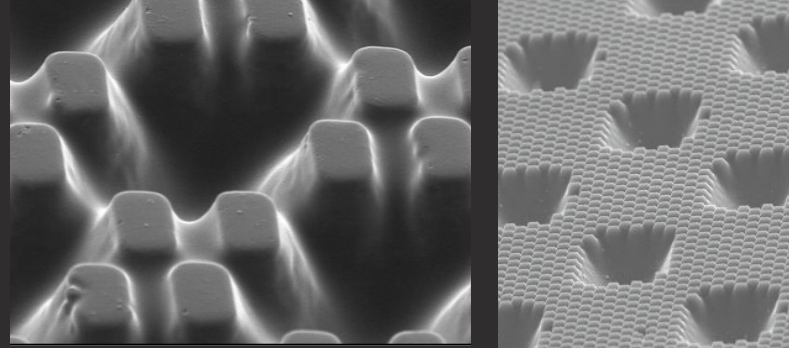
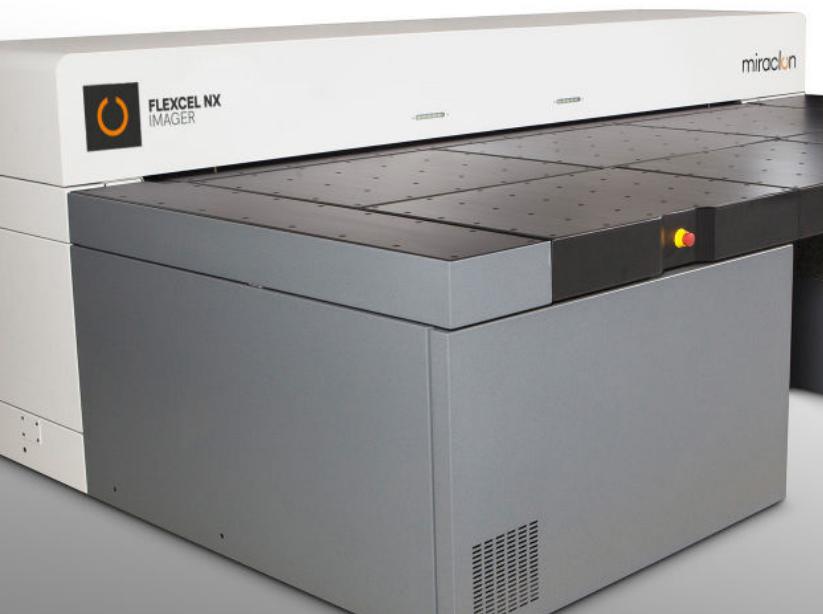
#### Rich capabilities.

Versatile products and proven technologies that can adapt quickly to shifting markets are the rule. Already a robust platform, enhancements to the FLEXCEL NX System are backwards compatible. Outstanding imaging technology, impressive productivity and process stability along with easy maintenance - a solid ROI.

#### | It's flexo. Transformed.

#### Complete solution.

With innovative hardware, software, and consumables designed to work seamlessly together, the FLEXCEL NX System delivers one powerful performance. Along with Miraclo's world-class service and support, you have a best-in-class solution for high-definition flexo printing that exceeds expectations. Even yours.



## Complete integration

### FLEXCEL NX Wide 5080 Imager

Enabling plate making up to an impressive 50 x 80 inches, its air cushion technology and leading edge detection streamline large format handling. Easy to use and semi-automatic with impressively fast imaging, it's designed to work exclusively with FLEXCEL NX Plate Kits. And for a process-free alternative to conventional silver halide film, it's fully compatible for KODAK DITR Film imaging.

### FLEXCEL NX Wide 5080 Laminator

Enhanced features facilitate switching between plate sizes and thicknesses. Quick and simple lamination of the FLEXCEL NX Thermal Imaging Layer to the FLEXCEL NX Plate prior to exposure and processing removes all oxygen between mask and plate for full-amplitude flat top dots. Crystal clear difference.

### FLEXCEL NX Central Software

The FLEXCEL NX System includes FLEXCEL NX Central Software, an automated solution which optimizes the plate layout process and streamlines the delivery of Miracron's advanced plate surfacing patterning technology. The software maximizes production efficiency so that you can complete more jobs in less time, at a lower cost.

### Powered by NX Advantage

NX Advantage technology, that includes patented Advanced Edge Definition, is unique to the FLEXCEL NX System and gives flexo printers an unprecedented level of control over ink transfer during the printing process, resulting in substantial print production efficiency and quality benefits with a simple plate portfolio.

### SQUARESPOT Technology

SQUARESPOT Imaging Technology is Kodak's award-winning imaging technology. SQUARESPOT Technology allows printers to reach a higher level of stability, accuracy, and reliability in their printing operation.

# FLEXCEL NX Wide 5080 System

## Technical Specifications

Workflow specifications			
<b>Workflow connectivity</b>	FLEXCEL NX Central Software; accepts 1 bit TIFF and LEN files from all workflow systems		
Specifications for imaging Flexcel NX Thermal Imaging Layer (TIL)			
<b>Imaging speed</b>	With DIGICAP NX Patterning applied: 12.5 m <sup>2</sup> /hr Without NX Patterning applied: 6.5 m <sup>2</sup> /hr		
<b>Media sizes and throughput *</b> (includes loading and unloading)	TIL-R size	For plate size	Sheets imaged per hour @ 2400 dpi with DIGICAP NX
	640 x 838 mm (25.2 x 33 in)	610 x 762 mm (24 x 30 in)	10
	838 x 1097 mm (33 x 43.2 in)	800 x 1067 mm (31.5 x 42 in)	7.5
	940 x 1230 mm (37 x 48 in)	900 x 1200 mm (35.4 x 47.2 in)	5.5
	1097 x 1554 mm (43.2 x 61.2 in)	1067 x 1524 mm (42 x 60 in)	5.5
	1283 x 1681 mm (50.5 x 66.2 in)	1270 x 1651 mm (50 x 65 in)	4
	1283 x 2062 mm (50.5 x 81.1 in)	1270 x 2032 mm (50 x 80 in)	3.5
<b>Resolution</b>	2400 dpi		
<b>Repeatability</b>	± 16 microns between 2 consecutive exposures on the same TIL left on the drum		
<b>Finish Plate Resolution</b>	300 lpi maximum linescreen (0.4% to 99.6%)		
Physical characteristics for imager			
<b>Dimensions (H x W x D)</b>	120 x 323 x 213 cm (47 x 127 x 84 in); Loading table height: 84 cm (33 in)		
<b>Debris removal cabinet (UDRC)</b>	88 x 63 x 54 cm (35 x 25 x 21 in)		
<b>External vacuum pump (H x W x D)</b>	51 x 67 x 144 cm (20 x 26 x 57 in)		
<b>Weight</b>	Imager: 1760 kg (3870 lb) UDRC: 68 kg (150 lb)		
Physical characteristics for laminator			
<b>Dimensions (H x W x D)</b>	78 x 134 x 277 cm (30.7 x 52.7 x 109 in); Table height with handle: 131 cm (51.5 in)		
<b>Weight</b>	950 kg (2094 lb)		
Operating conditions			
<b>Temperature</b>	17°- 30°C (63° - 86°F)		
<b>Humidity</b>	40% - 60% relative humidity, non-condensing		
Optional upgrades			
<b>Hybrid Option</b>	Enables the imaging of thermal offset plates		
<b>Accessories</b>	Densitometer, moveable media rack and two rolling carts, FLEXCEL NX Workstation		

\*FLEXCEL NX System is compatible with DITR Film.

# A full portfolio

System Type	Plate sizes					
	610 x 762 mm 24 x 30 inch	800 x 1067 mm 31.5 x 42 inch	900 x 1200 mm 35.4 x 47.2 inch	1067 x 1524 mm 42 x 60 inch	1270 x 1651 mm 50 x 65 inch	1270 x 2032 mm 50 x 80 inch
FLEXCEL NX Wide 5080 System	•	•	•	•	•	•
FLEXCEL NX Wide 4260 System	•	•	•	•		
FLEXCEL NX Wide 3548 System	•	•	•			
FLEXCEL NX Mid System	•	•				
FLEXCEL NX Narrow System	•					